



**Manjushree Technopack Limited**  
Corporate Office  
2nd Floor, MBH Tech Park, 46,47,  
Hosur Road, Electronic City Phase II,  
**Bangalore** 560 100, Karnataka INDIA  
T : 91 80 4343 6200  
E : info@manjushreeindia.com  
[www.manjushreeindia.com](http://www.manjushreeindia.com)

**Preforms Division - Bidadi**  
Plot No. 71 &72, Sector 2, Phase 2  
Bidadi Industrial Area,  
**Bangalore** 562 109, Karnataka  
INDIA

**Preforms Division - Pantnagar**  
Plot No. 23, Sector 2,  
Integrated Industrial Area,  
**Pantnagar** 263 145, Uttaranchal  
INDIA

**Preforms Division - Guwahati**  
Village : Nizsindurighopa,  
Chowkigate, Changsari  
**Guwahati** 781 101 Assam  
INDIA

**Closures Division - Jalgaon**  
J-59, M.I.D.C Area,  
Jalgaon - 425003  
**Maharashtra**  
INDIA



**MEI**Forms  
For peace of mind

Complete beverage packaging solutions

Manjushree Technopack Limited  
INDIA



- **Unparalleled quality:** High performance preforms and closures. Largest beverage manufacturers in India rely on us for seamless quality and peace of mind.
- **Large portfolio across segments:** We offer large portfolio of preforms and closures for most necks used in beverage segment. You don't have to look elsewhere for your preform and closures needs when you partner with us.
- **Continuous innovation:** MTL was first to launch large scale commercial capacity of PCO 1881 preforms in India. We are again first to launch large scale capacity of 32mm aseptic and 26/22 preforms in India.
- **Assured supplies:** Warehousing space and season pre-build of up to 20K MT of preforms and closures across plants. Preform or closures shortfall and business loss in season is the last worry for our regular customers - Peace of mind.
- We are South Asia's largest beverage packaging material manufacturer. End to end capability for beverage packaging - preforms, closures, shrink film and jars.
- Capacity of more than 100K MT per annum of PET conversion to preforms and more than 6 billion closures.
- We work with all major beverage manufacturers in the country. Largest supplier to both Coca-Cola and Pepsico in India.
- Country wide presence: Preform manufacturing capability at Bangalore, Pantnagar, Visakhapatnam, Guwahati and closures manufacturing capability at Jalgaon.
- State-of-the-art of platform: Largest Husky platform in India and from other reputed OEM'S. Largest number of SACMI machines for closurs under one roof.
- We also offer state-of-the-art solution for bulk water manufacturing: 5 ltr, 10 ltr and 20ltr jars, preforms, caps and handles.
- State-of-the-art Reifenhauer platform for shrink film.
- Our 5000 + customer and stock products serve customers across multiple segments.
- We successfully completed our management transition in 2019 and are now governed by professional board and management team.

## Manufacturing Footprint



## TECHNOLOGY ADVANTAGE



# Our Growth Story



# PRESENCE PAN INDIA

## Manesar Plant

20 ltr Jars



**Certifications:** Coca-Cola (CERTIFIED BY COKE), FSSC 22000 (FOOD SAFETY SYSTEM CERTIFICATION 2200), Intertek UKAS (ISO 9001:2015), Sedex, GOLDEN PEACOCK AWARDS.

**Clientele:** PERFETTI, Dabur, ORGANIC INDIA, bajaj Corp Ltd., MGS, Dr.Oetker.



## Pantnagar Plant

Preforms



**Certifications:** Coca-Cola PEPSI (CERTIFIED BY COKE AND PEPSI), FSSC 22000 (FOOD SAFETY SYSTEM CERTIFICATION 2200), Intertek UKAS (ISO 9001:2015), Sedex, GOLDEN PEACOCK AWARDS.

**Clientele:** Coca-Cola, PEPSI, emami, adani, PERFETTI, Reckitt Benckiser, Dabur.



## Jalgaon Plant

Caps & Closures



**Certifications:** Coca-Cola PEPSI (CERTIFIED BY COKE AND PEPSI), FSSC 22000 (FOOD SAFETY SYSTEM CERTIFICATION 2200), ISO 9001:2015, ISO 14001:2015, ISO 45001:2018.

**Clientele:** Coca-Cola, PEPSI, Dabur, Bisleri, Parle Agro, adani, Davat, AQUAFINA, Amul, Mapro, Himalayan, SG, Bailey, IRCTC, TATA GLOBAL BEVERAGES, DIAGEO, bajaj Corp Ltd., emami, marico.



## Guwahati Plant

Preforms



**Certifications:** FSSC 22000 (FOOD SAFETY SYSTEM CERTIFICATION 2200), Intertek UKAS (ISO 9001:2015), Sedex, GOLDEN PEACOCK AWARDS.

**Clientele:** Bisleri, adani, Johnson, TATA GLOBAL BEVERAGES, DIAGEO, bajaj Corp Ltd., emami, marico.



## Bidadi Plant

Preforms, Shrink Film & 20 ltr Jar.



**Certifications:** Coca-Cola PEPSI (CERTIFIED BY COKE AND PEPSI), FSSC 22000 (FOOD SAFETY SYSTEM CERTIFICATION 2200), IAF (QMS STANDARDS ISO 9001:2015), Sedex, GOLDEN PEACOCK AWARDS.

**Clientele:** Coca-Cola, PEPSI, Bisleri, Podaran, TATA GLOBAL BEVERAGES, KI, BRITANNIA, SG, BIG, paper boat, Amul.



## Visakhapatnam Plant

Preforms



Upcoming Plant in 2023

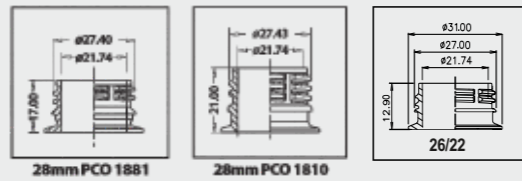


# Leveraging our wide product portfolio across pack type and fill volume



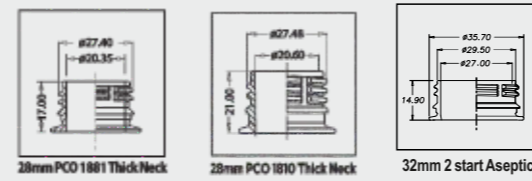
Sparkling Beverages

- Widest application offering (150ml - 3000ml)
- HUSKY platform - Highest Quality & Consistency
- All Necks for CSD Application



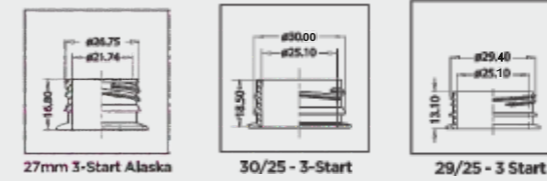
Hot Fill / Juice

- Widest application offering (250ml - 1500ml)
- Offerings on both platforms, TN & PCO1881
- Aseptic 32mm prefoms



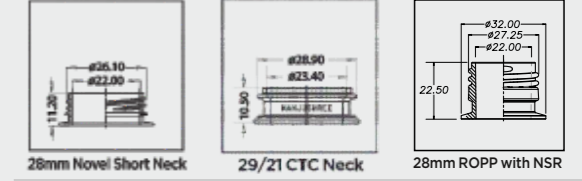
Water

- Widest application offering (200ml - 2000ml)
- HUSKY platform - Highest Quality & Consistency
- All necks for water application



Edible Oil

- Offering on both solutions CTC & NSN neck types
- Application offering from (200ml - 1000ml)



Closures	2.35, 2.5, 2.75		1.8
Volume (ml)	Weight (gm)	Weight (gm)	Weight (gm)
150ml 200ml	9.8		9.9
	10.5		
	11.5		
	12.0		
200ml - 250ml	12.0	15.1	
	13.0	16.5	
300ml	14.7	17.8	13.0**
	15.9		
	16.0		
500ml	18.5	23.5	
	19.5	25.0	
	21.4	25.5	
	22.2	27.0	
600ml	22.2		20.5**
	23.0		
	25.1		
	25.7		
750ml	27.1		
	29.8		
	30.7		
	30.7		
1000ml 1500ml	31.9		44.0**
	32.5		
	34.7	36.0	
	37.7		
	45.5		
	46.7		
2000ml - 2500ml	46.7		48.0
	52.7		
3000ml	56.7		

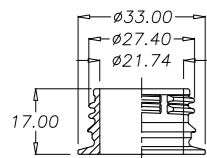
	2.10, 2.20	2.75	2.4
	Weight (gm)	Weight (gm)	Weight (gm)
			13.6
	18.0	18.5	
	22.4	23.8	
		27.0	
	33.0**		
	45.7	47.0	36.0**

	1.5, 1.35		
	Weight (gm)	Weight (gm)	Weight (gm)
	9.5**		
	10.0		
	10.6		
	12.5	15.3	12.0
	13.5		
	13.6		
	15.6	18.0	
	19.0	20.1	17.15
	19.5		
	20.0		
	21.0		
	22.0		
	28.0	18.6	26.0
	31.5		
	32.5	37.2	
	34.0		
	35.6		

	1.0		
	Weight (gm)	Weight (gm)	Weight (gm)
			8.5
		10.0	
	8.0		
	12.0	13.0	25.0
		14.5	
		15.3	
	18.0	19.5	47.0
	19.0	21.5	
		24.0	

\*\*Soon to be launched

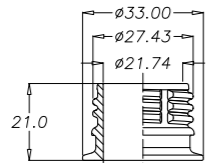
# PREFORMS AVAILABLE FROM BIDADI



28mm PCO 1881

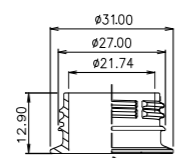
Weight (gm)	Length (mm)
10.50	65.00
11.50	76.00
12.00	76.00
13.00	76.00
14.70	80.30
14.70	81.00
14.70	81.00
15.90	78.00
16.00	80.30
16.00	81.00
16.00	81.00
18.50	94.00
19.50*	94.56
21.40*	94.56
22.20	94.00
22.20	96.50
23.00	96.50
25.70	96.50
25.70	103.2
25.10*	97.00
27.10	96.50
29.81*	107.0
30.70	106.5
31.93*	123.8
32.00	122.0
32.50	123.3
34.70	123.3
37.70	124.5
45.50	144.0
46.70	135.0
52.70	144.0
56.70	144.0

\* Ecobase Preform



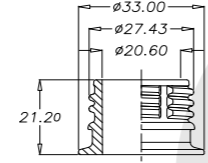
28mm PCO 1810

Weight (gm)	Length (mm)
15.10	83.20
16.50	82.50
17.80	82.50
17.50	85.00
23.50	98.00
25.00	95.80
25.50	100.50
27.00	100.50
27.00	107.40
36.00	127.30
39.00	128.50
48.00	139.00



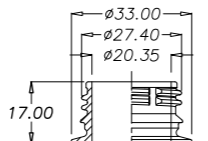
26/22 30.37 GME

Weight (gm)	Length (mm)
9.90	71.90
9.90	69.00



28mm PCO 1810 Thick Neck

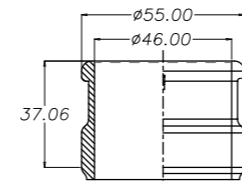
Weight (gm)	Length (mm)
18.50	84.50
23.80	87.97
27.00	107.40
34.20	114.00**
47.00	139.00



28mm PCO 1881 Thick Neck

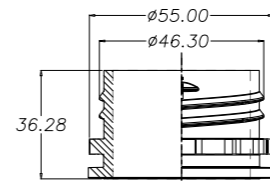
Weight (gm)	Length (mm)
18.00	70.90
22.40	83.77
33.00	110.00
45.70	135.00

## PREFORMS FOR HOT FILL FRUIT JUICES



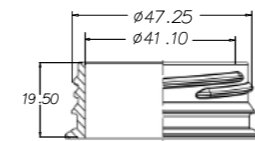
55 mm - 20Ltr water Snap

Weight (gm)	Length (mm)
675.00	386.00



55 mm - 20Ltr water Thread

Weight (gm)	Length (mm)
675.00	376.00



48 mm 3start

Weight (gm)	Length (mm)
82.00	134.50
200.00	180.00



## PREFORMS FOR BULK WATER PACKAGING

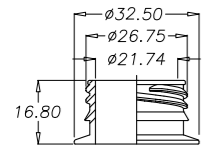
Available as preforms or as complete BLOWN JARS, together with closures



## PREFORMS FOR CSD, SODA AND WARM FILL JUICE

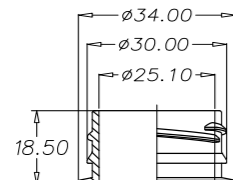


## PREFORMS FOR WATER AND EDIBLE OILS



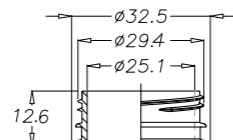
27mm 3-Start Alaska

Weight (gm)	Length (mm)
9.30	65.00
10.00	64.80
10.60	66.00
12.50	81.00
12.50	81.00
13.60	81.00
13.50	81.00
13.60-L	84.00
15.60	84.00
19.50	104.0
19.00	100.50
20.00	107.80
21.00	104.0
21.00	100.50
22.00	107.80
32.50	125.00
34.00	125.00
35.60	125.00



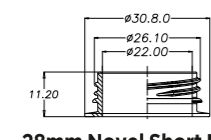
30/25 - 3-Start

Weight (gm)	Length (mm)
15.30	86.00
18.00	86.00
20.10	109.50
22.00	109.50
28.00	110.00
31.50	110.00
37.20	127.90



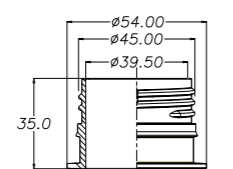
29/25 - 3 Start

Weight (gm)	Length (mm)
12.00	80.10
17.15	96.50
18.60	94.36
26.00	104.10
32.00	122.0



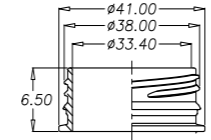
28mm Novel Short Neck

Weight (gm)	Length (mm)
12.00	78.00



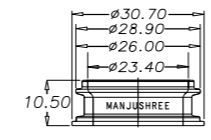
46 mm Single start

Weight (gm)	Length (mm)
110.00	195.00



38mm 3 Start twist off

Weight (gm)	Length (mm)
29.00	100.00

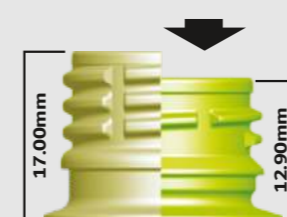


29/21 CTC Neck

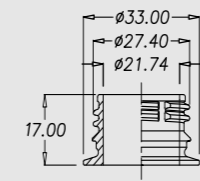
Weight (gm)	Length (mm)
14.50	80.50
15.30	80.50

## INNOVATION

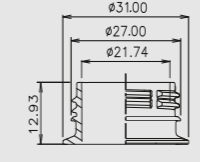
26/22 Neck Preforms for CSD/ Warmfill



PCO 1881 | PCO 26/22



28mm PCO 1881

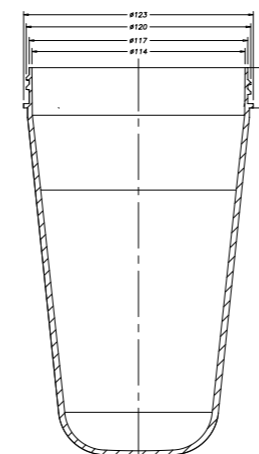


26/22 - 30.37 GME

Weight (gm)	Length (mm)
9.20*	69.00
9.90	71.90
10.40*	71.90
11.40*	71.90

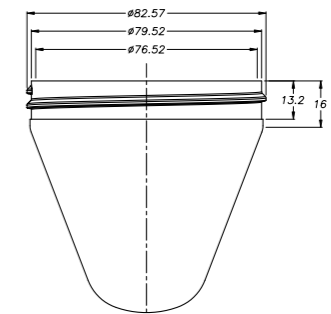
\* Soon to be launched

## WIDE MOUTH PREFORMS



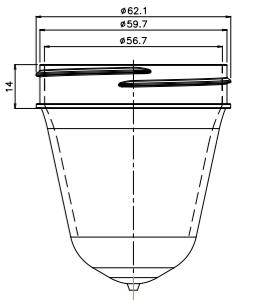
120mm Wide Neck Preform

Weight (gm)	Length (mm)
105.0	114.0
110.0	130.0
120.0	130.0
125.0	140.0
126.0	130.0
140.0	140.0
240.0	207.0
260.0	207.0
320.0	207.0



83mm Wide Neck Preform

Weight (gm)	Length (mm)
38.00	63.00
50.00	63.00



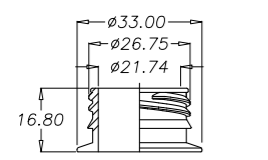
63mm Wide Neck Preform

Weight (gm)	Length (mm)
30.00	70.00
34.00	70.00
36.00	70.00

The first large scale commercial installation of 26/22 portfolio preforms in India. Plan to scale up for all major packs soon.

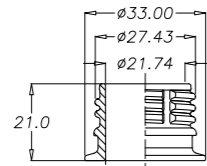
Continuing its legacy of innovation and ahead of time investments, Manjushree proudly launches 26/22 preforms in India. These preforms offer 1.50 gm saving in preform weight and 0.8 gm saving in closure weight – total of 2.3 gm

## PREFORMS AVAILABLE FROM GUWAHATI



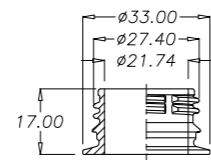
28mm 3-Start Alaska

Weight (gm)	Length (mm)
10.00	64.80



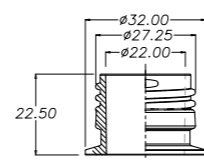
28mm PCO 1810

Weight (gm)	Length (mm)
12.40	80.55
14.60	80.55



28mm PCO 1881

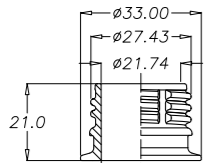
Weight (gm)	Length (mm)
9.80	66.00
10.30	66.00
10.50	66.00
12.00	76.35
13.00	76.35



28mm ROPP with NSR

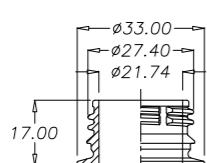
Weight (gm)	Length (mm)
25.00	104.0

## PREFORMS AVAILABLE FROM PANTNAGAR



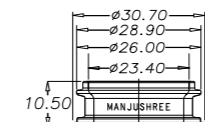
28mm PCO 1810

Weight (gm)	Length (mm)
12.90	72.50
25.00	19.80
49.50	139.0



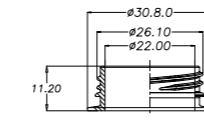
28mm PCO 1881

Weight (gm)	Length (mm)
10.50	68.50
11.20	68.50
12.50	72.50
12.50	81.00
13.40	72.50
13.50	81.00
14.50	81.00
15.17	72.50
23.70	91.80
25.70	96.50
29.80	107.0
30.70	106.5



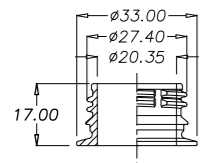
29/21 CTC Neck

Weight (gm)	Length (mm)
10.00	80.50
13.00	83.00
19.50	101.0
21.50	101.0
24.00	101.0



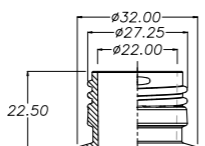
28mm Super Short Neck

Weight (gm)	Length (mm)
8.00	64.00
8.20	64.00
12.00	78.00
18.00	99.50
18.20	99.00
19.00	99.00



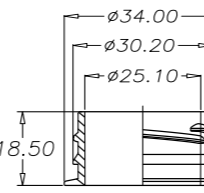
28mm PCO 1881 Thick Neck

Weight (gm)	Length (mm)
18.00	70.90
22.15	83.77



28mm ROPP with NSR

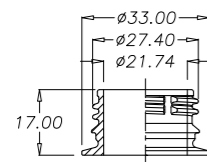
Weight (gm)	Length (mm)
47.00	141.30



30/25 - 3-Start

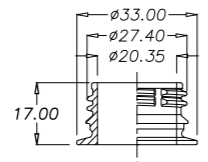
Weight (gm)	Length (mm)
22.00	110.0

## PREFORMS AVAILABLE FROM VISAKAPATNAM



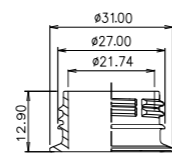
28mm PCO 1881

Weight (gm)	Length (mm)
15.17	72.45
29.80	107.0
52.70	144.0



28mm PCO 1881 Thick Neck

Weight (gm)	Length (mm)
18.00	70.90

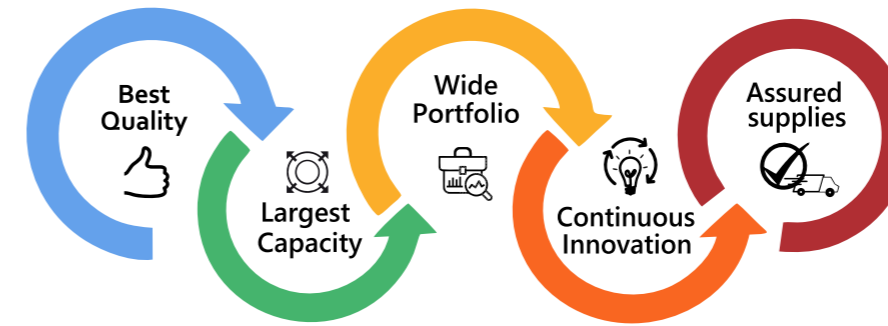


26/22

Weight (gm)	Length (mm)
9.90	69.00
9.20	69.00



# PEACE OF MIND



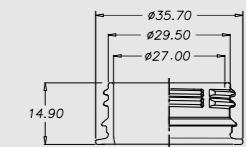
## SERVICES FOR MTL CUSTOMERS

- Acetaldehyde test
- Moisture test
- Automatic optical imaging based dimension test
- Top load test for bottles and Jars
- Design support for new packs
- New preform development
- On-site troubleshooting and audit support



## INNOVATION

### 32mm Aseptic / Cold Fill Preforms



32mm 2 start Neck

Weight (gm)	Length (mm)
13.60	66.30
36.00	102.9**

\*\*Soon to be launched



38mm Neck | 32mm Neck



29% (2.09gm) Total Package Savings !

MTL Proudly announces launch of 32mm neck aseptic preforms. These preforms promise following advantages against 38mm neck :

- Vented slot for better blow-off performance like 38mm 2 Start.
- B-step like 38mm 3 Start neck
- Better drinking experience for small and as well as large pack with optimum bore diameter
- Cete standard neck GME 30.36 uniform globe standard neck
- Proven performance and successful across markets, OEM and product
- Global brands moving from 38mm to 32mm

# Closures for Beverage Industry



## WATER

27mm Alaska	26mm NSN	20Ltr
1.5gm 1.35gm	1gm	11gm



## CSD

25mm	PCO-1881	PCO-1881	26/22
1.8gm , 1.65gm Single Piece	2.75gm 2 Piece	2.5gm (6 Design ) 2.35gm (13 Design)	1.8gm 30.37GME



## JUICE

25mm	PCO-1881	PCO-1810	28mm Hot Fill
1.45gm, 1.55gm Single Piece	2.1gm	2.7gm	1810 - 2.75gm 1881 - 2.2gm



## ASEPTIC

32mm Aseptic	38mm 2 Start	38mm 3 Start
2.5gm	3.4gm	3.0gm



## SAUCE & HONEY

32mm Fliptop with TPE Valve
10.5gm (Big) 4.0gm (Small)



## HEALTHCARE

25mm , 20mm Flip Top Caps
3.3gm / 1.9gm

# Complementary Products



Wrapping  
up your needs

SHRINK YOUR WORRIES,  
SEAL NEW POSSIBILITIES

Plastic bottles

Metal cans

Glass packages

Paper composites

Tetra pack cases



In a bid to fill in, every step of the supply chain in the packaging eco-system, we have stepped in to offer end-of line packaging solutions too. Introducing our brand new 3-layer Collation Shrink Film line. From Reifenhäuser, Germany. The plant has been specifically customized for the most efficient productions of LD shrink film. This shrink film provides you with an opportunity to reduce your existing paper carton for lesser packaging cost, easy handling and great merchandising appeal. The high performance collation shrink film has been specifically developed, keeping in mind the extreme climatic conditions of India, vagaries of transportation and the need for extended durability.



\* We also have a wide variety of Injection molded closures in a variety of neck options. Please contact for more details.